



# Notice of A46 closure and lane restrictions, near Kenilworth

March 2025 | [www.hs2.org.uk](http://www.hs2.org.uk)

High Speed Two (HS2) is the new high speed railway for Britain. Balfour Beatty VINCI (BBV) is working in partnership with HS2 Ltd to build the new high-speed railway in your area.

## The work we are doing

We will be pushing a new box structure to take the HS2 line under the A46 near Kenilworth. Once the box is slid into place, we will complete the remaining works; resurface the carriageway, reinstate the white lines and safety barriers ready to reopen the A46. While we deliver the works there will be increased construction activity, 24/7 operation, overnight lighting and some additional noise. We will minimise the impact on residents as much as possible.

## When the work will take place

To ensure the safety of our workforce, we will be closing a section of the A46 from the Stivichall Interchange (Festival Island) to the Thickthorn Island (A452 for Leamington and Kenilworth) for 19 days: we will hold three days as a contingency in case of an unforeseen event:

### 8pm Friday 11 April until 6am Thursday 1 May 2025

Afterwards there will be lane closures on the north and southbound carriageways with a speed restriction of 50mph until Thursday 31 July.

In the event of a programme delay we have a contingency window booked for 8pm Friday 16 May to 6am Thursday 5 June.

## What to expect

A fully signposted strategic diversion for HGVs in the region and a local diversion as well as special access arrangements for the villages of Stoneleigh and Ashow, please see the maps on the next pages.

**Join us for a community drop-in event at the Kenilworth Centre on Monday 17 March between 2pm and 7pm to find out more about the A46.**

**If you have a question about HS2 or our works, please contact our HS2 Helpdesk team on 08081 434 434 or email [hs2enquiries@hs2.org.uk](mailto:hs2enquiries@hs2.org.uk)**

## Duration of works

**8pm Friday 11 April – 6am Thursday 1 May**

with lane closures afterwards in both directions until Thursday 31 July. Our work is subject to formal consent from National Highways

## What to expect

A full road closure of the A46 with signposted diversion routes suitable for HGVs and local traffic. Increased construction activity overnight and some disruption to journey times during the closure

Follow signed diversions, **do not rely on your Sat Nav for directions**

## What we will do

Keep all sites safe and secure and update you on any changes at: [www.hs2inwarwickshire.co.uk](http://www.hs2inwarwickshire.co.uk)

# Notice of A46 closure and lane restrictions, near Kenilworth

Notification



## Strategic diversion route (suitable for HGVs and through traffic)

During the closure all HGVs must follow the diversion route below, HGVs travelling to **Coventry and onwards to the north**, please use the clearly signed diversion **M40, M42, M6 east** and then rejoin the **A46**.

For HGVs travelling to Kenilworth, please leave at the Thickthorn Roundabout (A452).

In addition to the black and yellow signs, there will be multiple electronic signs across the whole network to help road users to navigate their way.

National Highways have created a short video that explains why following official diversion routes is important: [https://youtu.be/4yu900m\\_xdM](https://youtu.be/4yu900m_xdM)



- Closure
- - - HGV Diversion

Date:21/02/2025

Scale: 1:148,386

A46 Kenilworth Bypass Diversion Route\_ 240102040643-BBVGIS-3081 GS\_BO

# Notice of A46 closure and lane restrictions, near Kenilworth

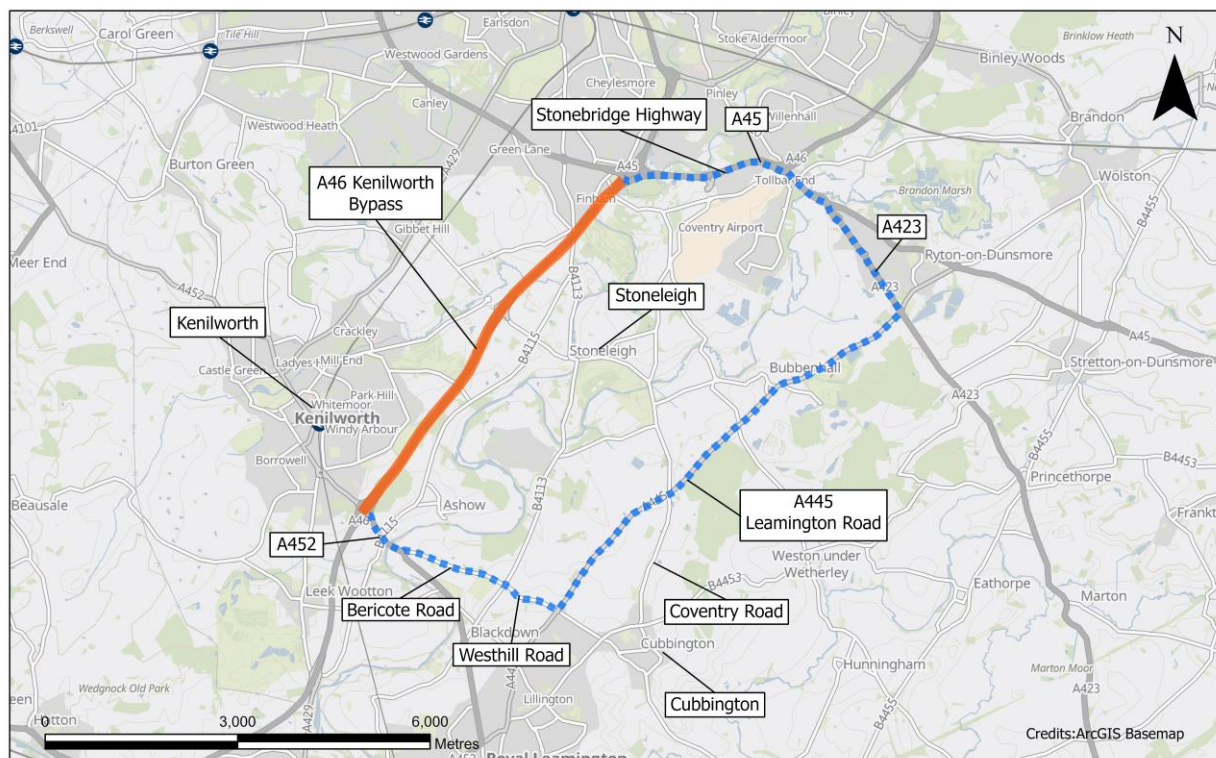
Notification



## Local diversion route

During the closure local traffic should use the following route. To access Kenilworth, please leave the A46 at the Thickthorn Roundabout. For northbound traffic and Coventry please leave the A46 at the Thickthorn Roundabout and travel along the A452, Bericote Road and Westhill Road, then use the A445 Leamington Road/ Leicester Lane and join the A423 towards Coventry and the A45 westbound to rejoin the A46. To travel south from Coventry please reverse the route.

Access to Ashow and Stoneleigh villages will not be possible from the B4115 Ashow Road at the Chesford Grange junction, this is to ease traffic flows and protect residents. Special provision has been made for local residents, please see pages five and six.



- Closure
- - - Diversion for local traffic only

Date:20/02/2025

Scale: 1:65,000

A46 Kenilworth Bypass Diversion Route Option Two\_240102042514-BBVGIS-3083 GS\_BO

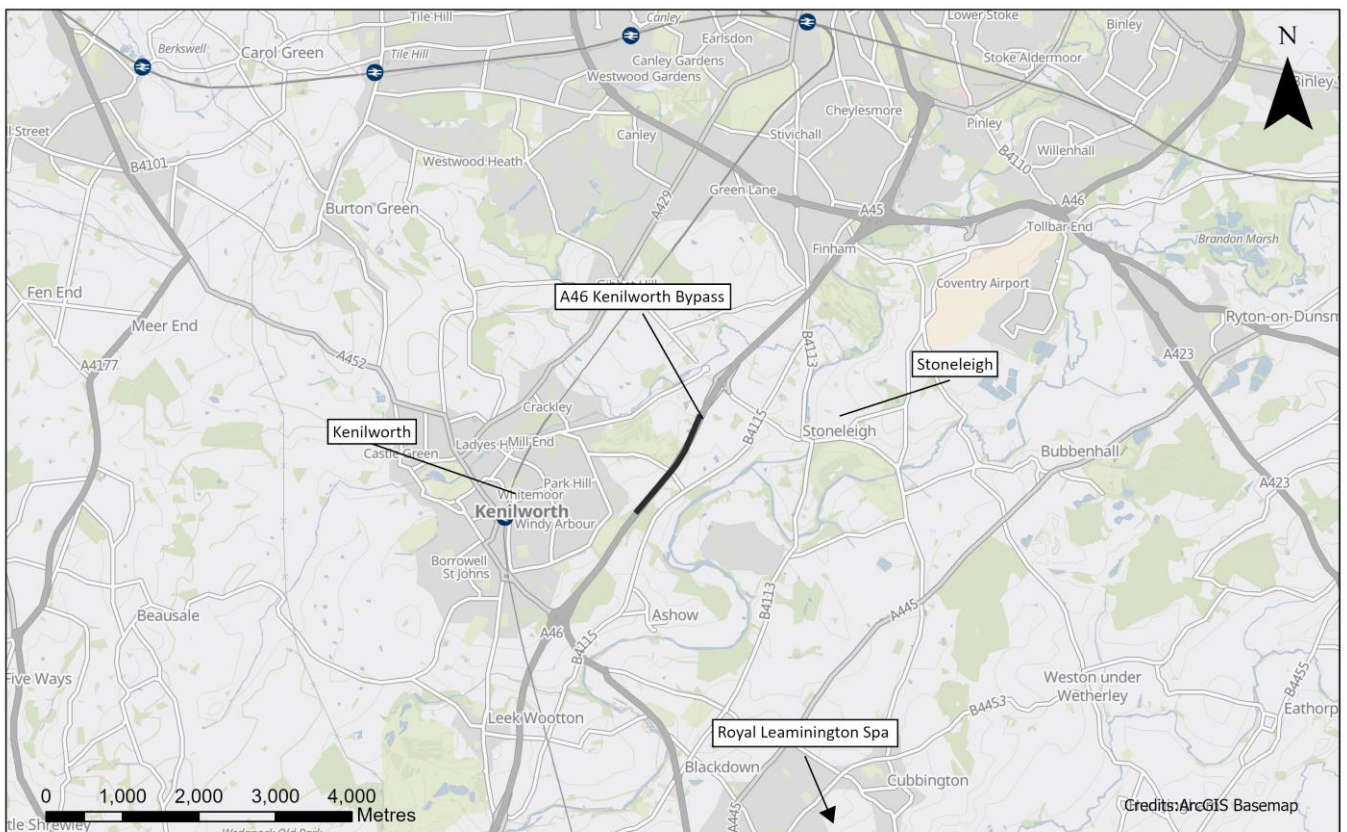
# Notice of A46 closure and lane restrictions, near Kenilworth

Notification



## Lane and speed restriction on the A46 following the closure

After the closure and box slide of the A46 there will be some ongoing traffic management until Thursday 31 July. This will consist of lane closure in both directions and a 50mph speed restriction on the carriageways.



North and southbound single lane closure and speed restriction

Date: 26/02/2025

Scale: 1:60,000

A46 Kenilworth Bypass Diversion Northbound and Southbound  
\_INC000004871462.3\_SL\_EG

## Public transport arrangements during the A46 closure

The following bus services may experience some amendment to their timetables; **U1, U1A, U2, X18, 69 and route 24**. For more information about the specific changes please visit:

<https://www.stagecoachbus.com/plan-a-journey>

<https://www.tfwm.org.uk/>

<https://nxbus.co.uk/coventry>

Contact our HS2 Helpdesk team on **08081 434 434**

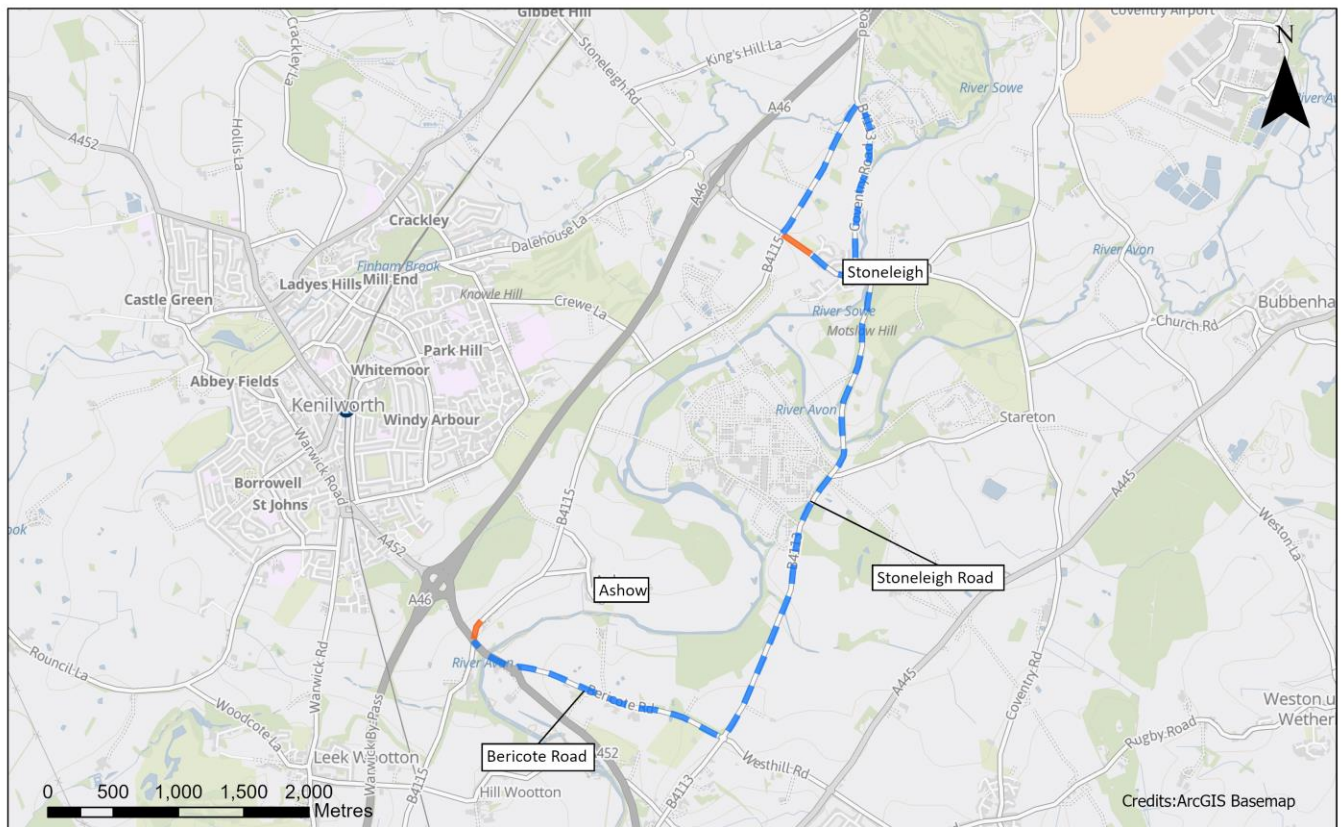
# Notice of A46 closure and lane restrictions, near Kenilworth

Notification



## Special access arrangements for Stoneleigh residents

During the closure residents in Stoneleigh may experience increased traffic in the area. To help mitigate this and to reduce the use of the village as a cut through, additional local closures will be in place. Stoneleigh residents should be aware that access into the village from the A46 side, along Birmingham Road will not be possible. Access between Kenilworth and Leamington for Stoneleigh residents will only be possible via the Stoneleigh Road (B4113), the Chesford Grange junction will be closed to through traffic. The restricted access to Stoneleigh is to ensure that residents are protected from displaced traffic and their access in and out of the village is maintained at all times. Please use the following routes.



Closure for Stoneleigh Village, access for residents only

— Diversion

Date: 26/02/2025

Scale: 1:35,000

Stoneleigh Village Special Access\_INC000004899287.1\_SL\_EG

Contact our HS2 Helpdesk team on **08081 434 434**

# Notice of A46 closure and lane restrictions, near Kenilworth

Notification



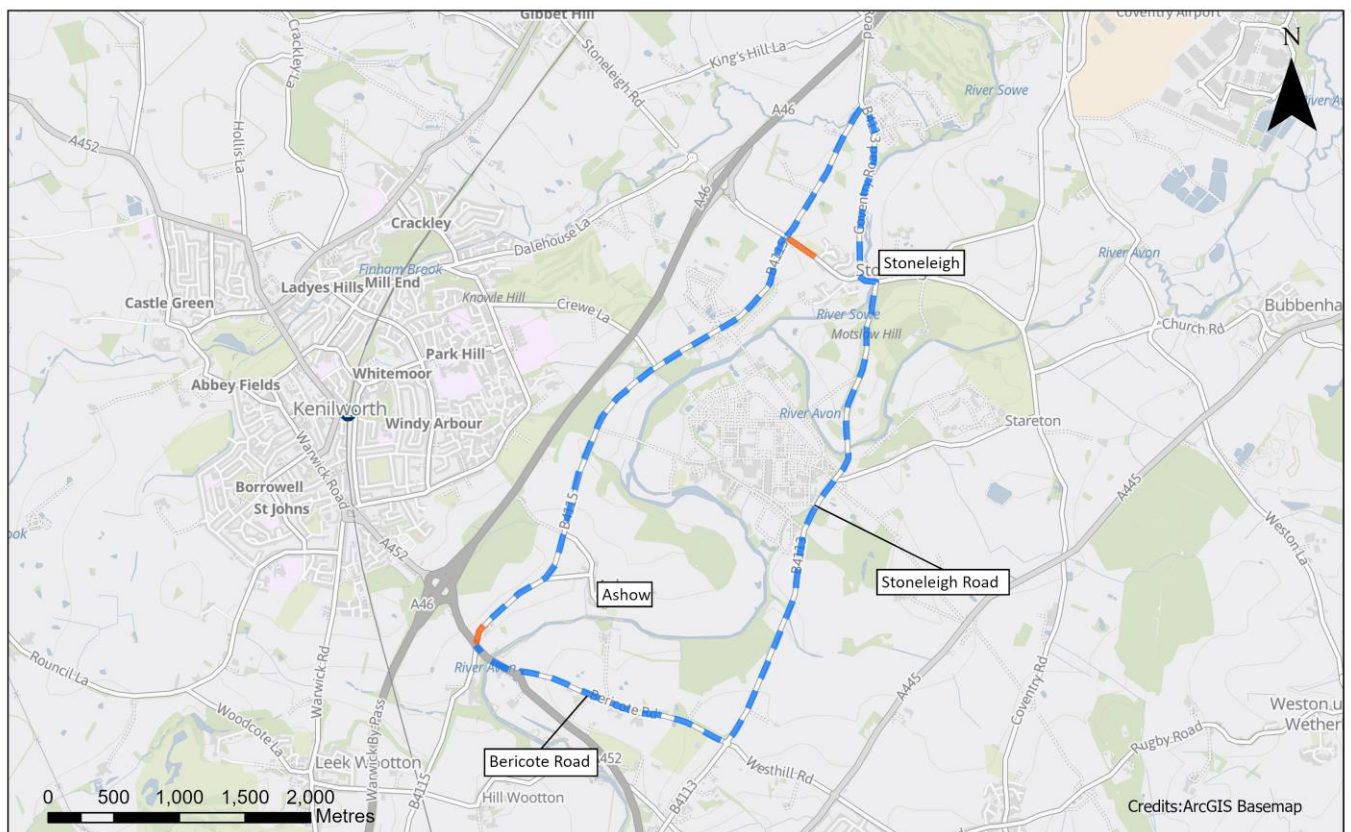
## Special access arrangements for Ashow residents and Stoneleigh Abbey

During the closure residents in Ashow and Stoneleigh Abbey may experience increased traffic in the area. To help mitigate this and to reduce the use of the area as a cut through, an additional local closure will be in place. Ashow residents should be aware that access into and out of the village from the Chesford junction will not be possible. Please use the following route.

Residents traveling to Kenilworth or Leamington will only be able to do so via Crewe Lane or along the diversion. The Chesford Grange junction will be closed to all but emergency vehicles. The closure of Ashow Road (B4115) is to ensure that local residents are protected from displaced traffic and the access in and out of the Abbey and village is maintained at all times.

During the closure, household bin collection will be maintained with some amendment to local collection times. More information can be found at:

[https://www.warwickdc.gov.uk/info/20465/rubbish\\_waste\\_and\\_recycling/918/service\\_disruptions\\_-\\_waste\\_and\\_recycling](https://www.warwickdc.gov.uk/info/20465/rubbish_waste_and_recycling/918/service_disruptions_-_waste_and_recycling)



Closure, access to Stoneleigh Abbey & Ashow residents via Crewe Lane direction only

— Diversion

Date: 26/02/2025  
Scale: 1:35,000  
Ashow Village Special Access\_INC000004899287.3\_SL\_EG

# Notice of A46 closure and lane restrictions, near Kenilworth

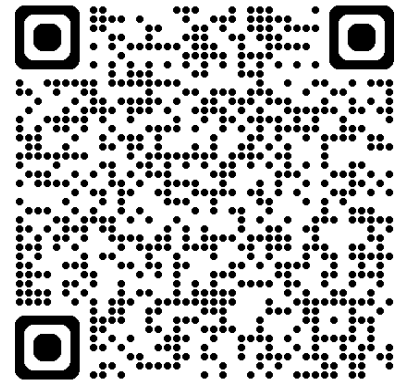
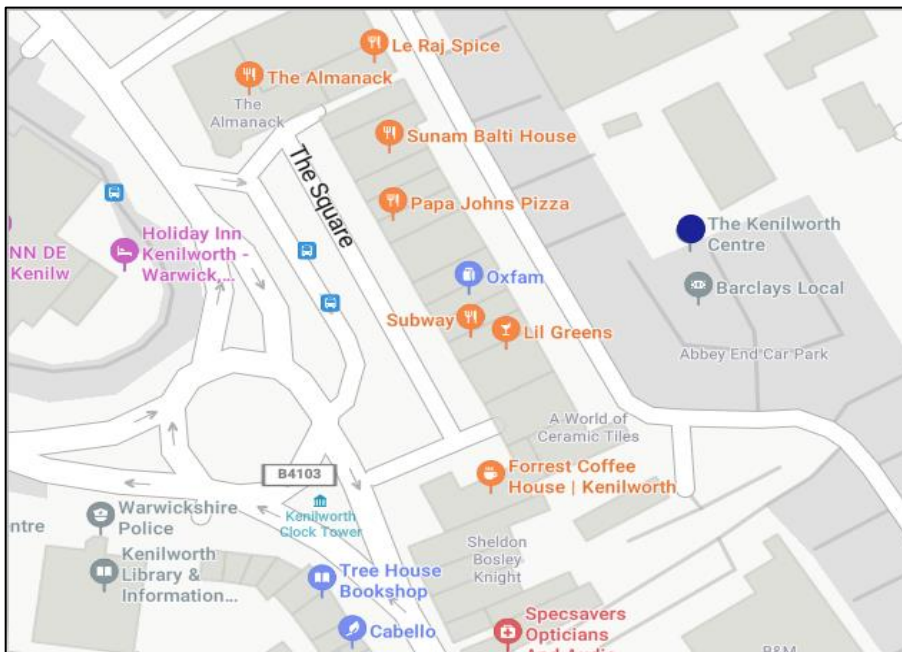
Notification



## We would like to invite you to a drop-in for an update on the A46 works at The Kenilworth Centre

High Speed Two (HS2) is the new high speed railway for Britain. We will be holding an informal drop-in event at The Kenilworth Centre where you can come and chat to the team about upcoming work, with a focus on the final phase of the A46 box slide.

**We will have specialists attending to answer your questions about the final A46 works**



**2 pm and 7 pm**

Address: The Kenilworth Centre, 65 Abbey End,  
Kenilworth, CV8 1QJ

Please register your interest using the QR code to the right or by  
visiting [www.hs2.org.uk/events/](http://www.hs2.org.uk/events/). We look forward to meeting you.

**Reference number: HS2-MW-BBV-Ph1-Ar-No-N1-CR-20-14/01/2025**

Freephone **08081 434 434**

Minicom **08081 456 472**

Email [hs2enquiries@hs2.org.uk](mailto:hs2enquiries@hs2.org.uk)

Website [www.hs2.org.uk](http://www.hs2.org.uk)

To keep up to date with what is  
happening in your local area, visit:

[www.hs2inyourarea.co.uk](http://www.hs2inyourarea.co.uk)

Contact our HS2 Helpdesk team on **08081 434 434**

# Keeping you informed

We are committed to keeping you informed about work on HS2. This includes ensuring you know what to expect and when to expect it, as well as how we can help you.

## The Residents' Commissioner

The independent Residents' Commissioner oversees and monitors our commitments to you.

The commissioner's reports and our responses can be found at [www.gov.uk/government/collections/hs2-ltd-residents-commissioner](http://www.gov.uk/government/collections/hs2-ltd-residents-commissioner)

The Residents' Commissioner makes sure we fulfil the commitments in the HS2 Community Engagement Strategy (<https://bit.ly/3oOA25j>).

The Residents' Commissioner can be contacted on: [residentscommissioner@hs2.org.uk](mailto:residentscommissioner@hs2.org.uk)

## Construction Commissioner

The independent Construction Commissioner regularly meets our Chief Executive Officer to raise any concerns or emerging trends across HS2.

The Construction Commissioner's role has been developed to monitor the way we manage and respond to construction complaints.

The commissioner mediates on disputes about construction, involving individuals and organisations, that we can't resolve. The commissioner advises members of the public about how to make a complaint about construction.

The Construction Commissioner can be contacted on: [complaints@hs2-cc.org.uk](mailto:complaints@hs2-cc.org.uk)

## Property and compensation

You can find out about HS2 and properties along the route by visiting:

[www.gov.uk/government/collections/hs2-property](http://www.gov.uk/government/collections/hs2-property)

Find out if you can claim compensation at:

[www.gov.uk/claim-compensation-if-affected-by-hs2](http://www.gov.uk/claim-compensation-if-affected-by-hs2)

## Holding us to account

If you are unhappy for any reason you can make a complaint by contacting the HS2 Helpdesk. For more details on our complaints process, please visit: [www.hs2.org.uk/in-your-area/contact-us/how-to-complain/](http://www.hs2.org.uk/in-your-area/contact-us/how-to-complain/)

**Reference number: HS2-MW-BBV-Ph1-Ar-No-N1-Traf-14-18/02/2025**

High Speed Two (HS2) Limited, registered in England and Wales.

Registered office: Two Snowhill, Snow Hill Queensway, Birmingham B4 6GA.

Company registration number: 06791686. VAT registration number: 888 8512 56

## Contact us

Contact our HS2 Helpdesk team all day, every day of the year on:

 Freephone **08081 434 434**

 Minicom **08081 456 472**

 Email **HS2enquiries@hs2.org.uk**

Write to:

**FREEPOST**

**HS2 Community Engagement**

Website **www.hs2.org.uk**

To keep up to date with what is happening in your local area, visit: **www.HS2inyourarea.co.uk**

**Please contact us if you'd like a free copy of this document in large print, Braille, audio or 'easy read' format. You can also contact us for help and information in a different language.**

HS2 Ltd is committed to protecting personal information. If you wish to know more about how we use your personal information please see our Privacy Notice: <https://www.gov.uk/government/publications/high-speed-two-ltd-privacy-notice>